



PROMOTING HOLISTIC TRAINING



STUDENT BROCHURE

FOLLOW US ON



www.nta.edu.au

PATHWAYS TO SUCCESS



RTO ID: 41009
CRICOS ID: 03575C

Head Office: Premises1: Suite 106-108, 3 Railway Parade, Burwood. NSW 2134
Premises 2: Suite 6 132 - 134 Burwood Road, Burwood. NSW 2134 t: + 61 2 9715 6528 f: + 61 2 9715 2339 e: info@nta.edu.au
CARE PLUS TRAINING PTY LTD T/A Nurse Training Australia. ABN: 291 661 75462. CRICOS ID: 03575C. RTO ID: 41009



“ I got the job when i was doing my training which was only because of excellent teaching by the teachers. I would love to recommend this course and i have already convinced most of my friends to enroll in to nurse training australia.”

Eric Zafra (Student)



Nurse Training Australia

About Us

We at Nurse Training Australia pride ourselves in providing students of all backgrounds and walks of life training in the healthcare sector that will lead to rewarding careers that help those who most need help in society.

Our students enjoy a high rate of employment after graduation. Often they get satisfying jobs that lead to lasting careers after only weeks of completing our courses.

Our trainers are known and respected industry professionals who are dedicated to their industry and care about student success. All of them are practising in the industry and so know the latest industry standards which they teach to all their students.

The healthcare industry in Australia is a growing one with ample possibilities of employment in the future across the whole country. No matter which state you move to you should be able to find work fairly quickly.

Our campuses are located in Sydney. Sydney is one of the most beautiful and multicultural cities in the world with modern conveniences and a friendly, healthy and safe ambience. Cultures from all across the world live in Sydney. The multitude of different communities provide a vibrant, colourful and diverse environment. There are few other places in the world where so many cultures live so happily together.

Our campuses are located just 100 metres from a train station that nearly all trains stop at. A train station that is just 7 minutes away from the heart of the city and its prime entertainment precincts.



Why Study **WITH US?**

Our college is a small, caring, learning hub that employs passionate and diverse staff who are professionals in their respective fields.

Our trainers are recognised professionals who still work in the industry and so are able to teach you the very latest of industry standards. We have a strong record in graduating students who quickly gain employment and launch a long and rewarding career thereafter.

Our college looks after a wide range of students and our staff know how to make your stay with us enjoyable and stimulating.

Other **FACILITIES** we offer



Free wifi access at all times



2 minute walk proximity to diverse eating and entertainment



Friendly, helpful, multicultural staff



Reception services 5 days per week, from 8:30am to 6:00pm



Well equipped computer lab for student use



A well-equipped simulation lab



Hands-on practical training



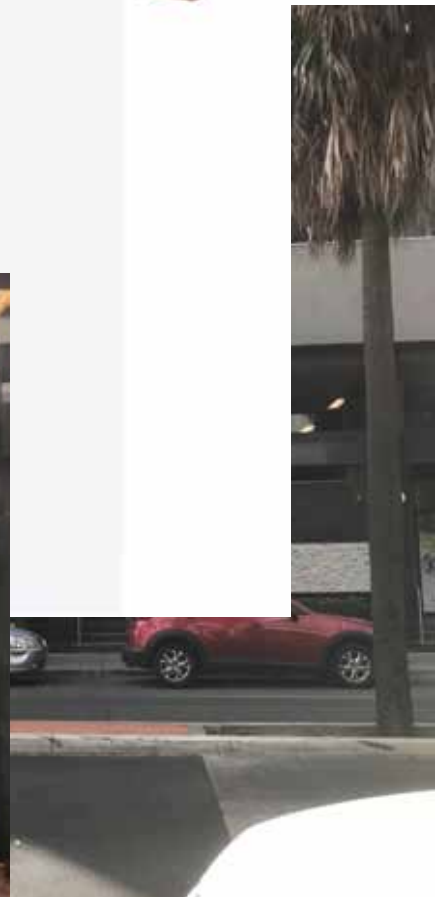
Direct exposure to the latest industry equipment





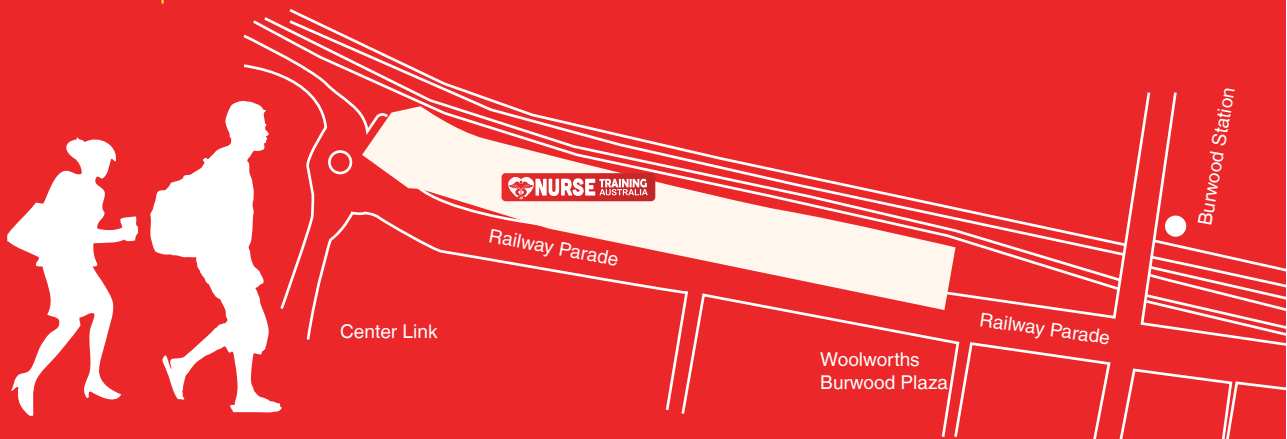
College **LOCATION**

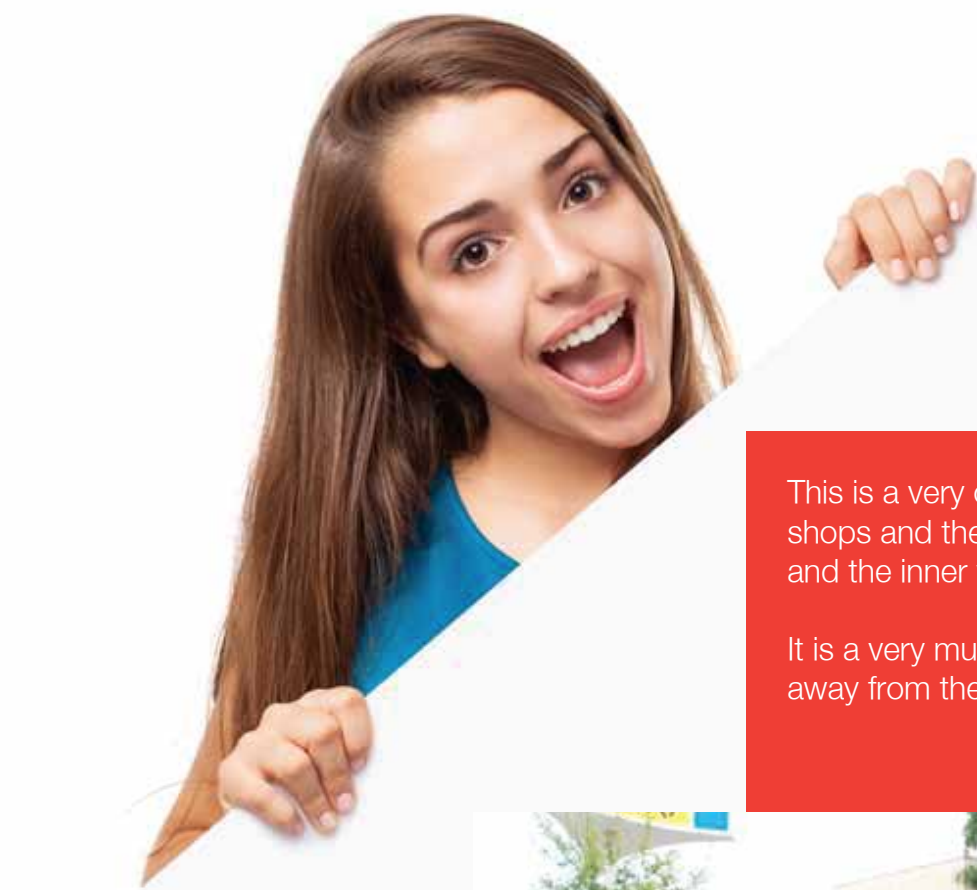
Nurse Training Australia
is located at:



Nurse Training Australia
is located at:

Location 1: HEAD OFFICE
Suite 106-108 | 3 Railway
Parade | Burwood
NSW 2134 | Australia





This is a very central location close to transport, shops and the commercial heart of Burwood and the inner west suburbs of Sydney.

It is a very multicultural area. A few minutes away from the Sydney CBD.

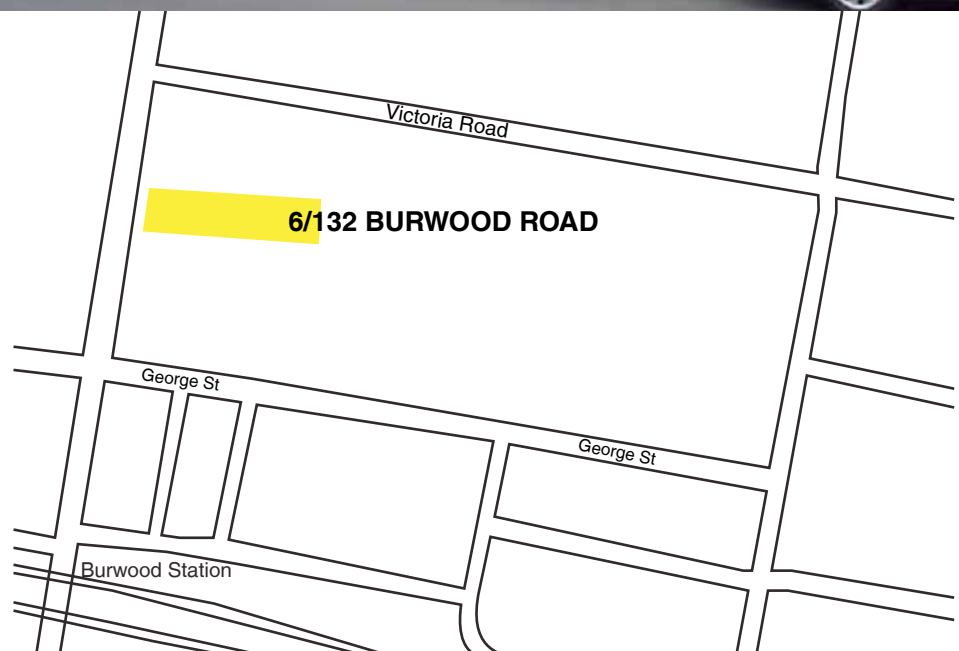


Nurse Training Australia

is located at:

Location 2

Suite 6 | 132 Burwood Road
Burwood | NSW-2134
Australia



You will be guided in this handbook and to other websites that set out your obligations as an overseas student studying in Australia. A very good resource for you to keep going back to is the Future Unlimited website www.studyinaustralia.gov.au and www.study.sydney website which has adequate resources and information for international students to study in Sydney.



LIVING COSTS in Australia

Knowing the average living costs in Australia is an important part of your financial preparation.

For your reference, here are some of the costs associated with living and studying in Australia. [All costs are in Australian dollars and linked to the consumer price index.]

Accommodation

• Hostels & Guesthouses _____	\$90 to \$150 a week
• Shared Rental On campus _____	\$95 to \$215 a week
• On campus _____	\$110 to \$280 a week
• Homestay _____	\$235 to \$325 a week
• Rental _____	\$185 to \$440 a week
• Boarding schools _____	\$11,000 to \$22,000 a year

Other living expenses

• Groceries & eating out _____	\$140 to \$280 a week
• Gas, electricity _____	\$10 to \$20 a week
• Phone and Internet _____	\$15 to \$30 a week
• Public transport _____	\$30 to \$60 a week
• Car (after purchase) _____	\$150 to \$260 a week
• Entertainment _____	\$80 to \$150 a week

Minimum cost of living

The Department of Immigration and Border Protection has financial requirements you must meet in order to receive a student visa for Australia. From 1st October 2019 the 12 month living cost is:

You \$21,041 | Your partner \$7,362 | Your first child \$3,152

All costs are per year in Australian dollars. To convert to your own currency, visit

<http://www.xe.com/> (opens in a new window)

The Australian Government provides information and guidance on managing your finances. You can read more at www.moneysmart.gov.au (opens in a new window)

The 'Insider Guides Cost of Living Calculator' is also a useful tool to help estimate your **cost of living** (opens in a new window) in Australia www.insiderguides.com.au/cost-of-living-calculator/ (opens in a new window).

If you experience financial trouble while in Australia, talk to your institution's international student support staff for assistance.

Courses We Offer for **INTERNATIONAL STUDENTS**

CHC33015: Certificate III in Individual Support

CRICOS Course Code: 097295M

A **6 months** course for International students [**26 weeks**]

Course OUTLINE

This qualification focuses on the role of workers in the community and/or residential setting who use an individualised plan to support people who may require person centred support due to ageing, disability or some other reason.

The Certificate III in Individual Support contains two specialist streams:

- Ageing
- Disability

This gives you the opportunity to complete a Certificate III in Ageing, then by doing a further four electives in disability, you will graduate with two qualifications. This model will increase employment opportunities and deepen their knowledge of the various sectors you may be working with in the future.

Who should do this COURSE?

People pursuing a career in a residential facility such as a Nursing Home, Hostel, Residential Care Facility, Disability Care Facility, Rehabilitation Centre, a Retirement Village & Community Health Care Centre or in some hospitals.

Graduates may seek employment in the following jobs:

- Assistant in nursing
- Community care worker
- Care assistant
- Community house worker
- Care worker
- Community support worker
- In-home respite worker
- Support worker
- Personal care assistant
- Home care assistant
- Personal care worker
- Disability service worker



Entry **REQUIREMENTS**

- Applicants must be 18 years or above
- School education at least at Australian high school leaving level Year 12 (HSC in NSW); or other relevant qualification/s;
- Or experience in an aged care or nursing environment;
- Academic IELTS 5.5 overall, no less than 5.0 in each band, or upper intermediate, or EAP from approved ELICOS/ESL centre or
- Evidence of completing a VET course at Certificate IV or above level in Australia.

Course **DURATION**

This course is 26 weeks. The structure is based on 20 hours per week as follows:

- You attend College two days a week for classroom learning, practice and assessment (8 hours each)
- You also study a structured study program by unit in the online learning platform (eZone) for 4 hours per week
- To get the most out of your course you need to do some self- study in your own time. When you are ready there is a work placement of 120 hours spread over 3 weeks
- Commencement dates are the start of every term.

See the website for our intake dates or ring the office for details.

Course **DELIVERY**

Delivery is a combination of methods to cover the theory and practice requirements:

- Workshops for developing your theory knowledge such as anatomy and medications and care plans
- Supplementary learning online for each unit in theory and skills and case studies
- Demonstrations then practice to give you that valuable practice time before you go to the work place
- Self-paced study and support to embed your learning and practical skills
- Work placements to apply your skills
- Students should have their own computing device and basic knowledge of computer skills.

You will be trained to use manual handling equipment and other equipment such as:

- Lifting hoist, Stand up Lifter, Pelican Belt, Slide Sheet, Electric bed, & Wheelchair.
- Glucometer, Blood Pressure, Pulse Oximeter etc.

Work Placement at an Aged Care facility is arranged with you and you will receive the support of one of our mentors to ensure this opportunity is a rewarding experience. For work placement, students have to wear your own black trousers and black closed shoes, we will provide you with NTA logo Polo T-shirt.

Course TOPICS

Study **13 units** to gain your qualification

7 Core units and **6 Elective** units. With electives, students have the option of selecting either Ageing stream or Disability stream as per the below list of units.

Our course has been designed to meet the requirements for the **CHC33015 Certificate III in Individual Support**.

Core UNITS

UNIT CODE	UNIT NAME	STATUS
CHCCCS015	Provide individualised support	Core
CHCCCS023	Support independence and well being	Core
CHCCOM005	Communicate and work in health or community services	Core
CHCDIV001	Work with diverse people	Core
CHCLEG001	Work legally and ethically	Core
HLTAAP001	Recognise healthy body systems	Core
HLTWHS002	Follow safe work practices for direct client care	Core

Electives UNITS

(Choose 3 of Group A electives for Ageing Stream or choose 4 of Group B electives for Disability stream)

UNIT CODE	UNIT NAME	STATUS
HLTAID003	Provide first aid	Electives
CHCAGE002	Implement falls prevention strategies	Electives
CHCPAL001	Deliver care services using a palliative approach	Electives

Group A electives – Ageing Specialisation

UNIT CODE	UNIT NAME	STATUS
CHCAGE001	Facilitate the empowerment of older people	Electives
CHCAGE005	Provide support to people living with dementia	Electives
CHCCCS011	Meet personal support needs	Electives

Group B electives – Disability Specialisation

UNIT CODE	UNIT NAME	STATUS
CHCDIS001	Contribute to ongoing skills development using a strengths-based approach	Electives
CHCDIS002	Follow established person-centred behaviour supports	Electives
CHCDIS003	Support community participation and social inclusion	Electives
CHCDIS007	Facilitate the empowerment of people with disability	Electives

For more details/information, ask for an Information Pack.

Course **ASSESSMENTS**

As this is a nationally recognised qualification, you will be required to successfully complete all units to a standard so that you are job ready. Each unit contains assessments which include:

- Knowledge based tests which contain written short answer questions, case studies and project works
- Practical demonstrations where you will be observed by one of our assessors in a simulated environment.
- Demonstration of clinical skills in Work place environment, assessed by our facilitator

Note: You must be deemed competent with each unit in order to receive your qualification.

Requirements for the **WORK PLACEMENT**

- A Police Clearance Certificate is mandatory prior to your work placement; you must under take a Federal Police Check (AFP) or NSW Police check (it must be no less than 12 months old).

This can be done through a website.

- Working with Children check
- Relevant immunization check (as per NSW health guide lines)

These checks must be completed at the start of the course and prior to industry work placement. **The students must be physically be able to do moderate amount of lifting** using the appropriate equipment. The students should not have any mobility, hearing, and vision problems to carry out duties efficiently in the hospital or community care settings whilst at placement.

Recognition of Prior Learning (RPL) and **CREDIT TRANSFER**

You may have developed a number of skills in community care, through previous employment opportunities, life experience or formal studies. If this is the case then you should ask about recognition of prior learning. This may shorten your course. If you hold a current First Aid Certificate from a recognised RTO you will be given credit for the first aid unit.

Course **PATHWAYS** **This is only the start of your academic journey**

After achieving the Certificate III in Individual Support you have a number of pathway options. You can complete further study and gain the Certificate IV in Ageing Support or Certificate IV in Disability with NTA or apply for Bachelor of Nursing.

In addition, on completion of the Certificate III in Individual Support, you can receive credits for units that make up the Certificate IV qualifications in Ageing Support, Disability, Mental Health and Leisure and Health.

CHC43015: Certificate IV in Ageing Support

CRICOS Course Code: 094433G

A one year course for International students [52 weeks]

Course **OUTLINE**

This qualification focuses on the role of support workers who complete specialised tasks and functions in aged services; either in residential, home or community based environments. Workers will take responsibility for their own outputs within defined organisation guidelines and maintain quality service delivery through the development, facilitation and review of individualised service planning and delivery.

Who should do this **COURSE?**

People pursuing a career in a facility such as a Nursing Home, Hostel, Residential Care Facility, Aged Care Facility, Retirement Village and Community Health Care Centre.

Graduates may seek employment in the following jobs:

- Personal care worker
- Care supervisor
- Day activity worker
- Care team leader
- Hostel supervisor
- Residential care worker

Entry **REQUIREMENTS**

- Applicants must be 18 years or above
- School education at least at Australian high school leaving level Year 12 (HSC in NSW); or other relevant qualification/s;
- Or experience in an aged care or nursing environment;
- Academic IELTS 5.5 overall, no less than 5.0 in each band, or upper intermediate, or EAP from approved ELICOS/ESL centre or
- Evidence of completing a VET course at Certificate IV or above level in Australia.

Course **DELIVERY**

Delivery is a combination of methods to cover the theory and practice requirements:

- Workshops for developing your theory knowledge such as anatomy and medications & care plans
- Supplementary learning online for each unit in theory and skills and case studies

- Demonstrations then practice to give you that valuable practice time before you go to the work place
- Self-paced study and support to embed your learning and practical skills
- Work placements to apply your skills.

You will be trained to use manual handling equipment and other equipment such as:

- Lifting hoist, Stand up Lifter, Pelican Belt, Slide Sheet, Electric bed, & Wheelchair.
- Glucometer, Blood Pressure, Pulse Oximeter etc.
- Medication Trolley, Medications (Dummy), & Dressing Trolley.

Work Placement at an Aged Care facility is arranged with you and you will receive the support of one of our mentors to ensure this opportunity is a rewarding experience. For work placement, students have to wear your own black trousers and black closed shoes, we will provide you with NTA logo Polo T-shirt.

Course TOPICS

Study 18 units to gain your qualification
15 Core units and 3 Elective units.

Our course has been designed to meet the requirements for the CHC43015 Certificate IV in Ageing Support.

Core UNITS

UNIT CODE	UNIT NAME	STATUS
CHCDIV001	Work with diverse people	Core
CHCLEG003	Manage legal and ethical compliance	Core
HLTAAP001	Recognise healthy body systems	Core
HLTWHS002	Follow safe work practices for direct client care	Core
CHCADV001	Facilitate the interests and rights of clients	Core
CHCAGE001	Facilitate the empowerment of older people	Core
CHCAGE003	Coordinate services for older people	Core
CHCAGE004	Implement interventions with older people at risk	Core
CHCAGE005	Provide support to people living with dementia	Core
CHCCCS006	Facilitate individual service planning and delivery	Core
CHCCCS011	Meet personal support needs	Core
CHCCCS023	Support independence and well-being	Core
CHCCCS025	Support relationships with carers and families	Core
CHCPAL001	Deliver care services using a palliative approach	Core
CHCPRP001	Develop and maintain networks and collaborative partnerships	Core

Electives UNITS

UNIT CODE	UNIT NAME	STATUS
HLTHPS006	Assist clients with medications	Elective
HLTHPS007	Administer and monitor medications	Elective
HLTAID003	Provide First Aid	Elective

For more details/information, ask for an Information Pack.

Course **ASSESSMENTS**

As this is a nationally recognised qualification, you will be required to successfully complete all units to a standard so that you are job ready. Each unit contains assessments which include:

- Knowledge based tests which contain written short answer questions, case studies and project works
- Practical demonstrations where you will be observed by one of our assessors in a simulated environment.
- Demonstration of clinical skills in Work place environment, assessed by our facilitator

Note: You must be deemed competent with each unit in order to receive your qualification.

Requirements for the **WORK PLACEMENT**

- A Police Clearance Certificate is mandatory prior to your work placement; you must under take a Federal Police Check (AFP) or NSW Police check (it must be no less than 12months old).

This can be done through a website.

- Working with Children check
- Relevant immunization check (as per NSW health guide lines)

These checks must be completed at the start of the course and prior to industry work placement. **The students must be physically be able to do moderate amount of lifting** using the appropriate equipment. The students should not have any mobility, hearing, and vision problems to carry out duties efficiently in the hospital or community care settings whilst at placement.

Recognition of Prior Learning (RPL) and **CREDIT TRANSFER**

You may have developed a number of skills in aged care, through previous employment opportunities, life experience or formal studies. If this is the case then you should ask about recognition of prior learning. This may shorten your course. If you hold a current First Aid Certificate from a recognised RTO you will be given credit for the first aid unit.

Course **PATHWAYS** **This is only the start of your academic journey**

After achieving the Certificate IV in Ageing Support you have a number of pathway options. You can complete further study and gain the Certificate IV in Disability or go on to the Diploma Community Services with NTA or apply for Bachelor of Nursing.

CHC43115: Certificate IV in Disability

CRICOS Course Code: 094434G

A **one year** course for International students **[52 weeks]**

Course **OUTLINE**

This qualification focuses on the role of workers in a range of community settings and clients' homes, who provide training and support in a manner that empowers people with disabilities to achieve greater levels of independence, self-reliance, community participation and wellbeing. Workers promote a person-centred approach, work without direct supervision and may be required to supervise and/or coordinate a small team.

Who should do this **COURSE?**

People pursuing a career in a facility such as a Nursing Home, Hostel, Residential Care Facility, Disability Facility, and Community Health Care Centre.

Graduates may seek employment in the following jobs:

- Accommodation support worker
- Care supervisor
- Care team leader
- Personal Care Worker
- Hostel supervisor
- Residential care worker

Entry **REQUIREMENTS**

- Applicants must be 18 years or above
- School education at least at Australian high school leaving level Year 12 (HSC in NSW); or other relevant qualification/s;
- Or experience in an aged care or nursing environment;
- Academic IELTS 5.5 overall, no less than 5.0 in each band, or upper intermediate, or EAP from approved ELICOS/ESL centre or
- Evidence of completing a VET course at Certificate IV or above level in Australia.

Course **DURATION**

This course is 52 weeks. The structure is based on 20 hours per week as follows:

- You attend College two days a week for classroom learning, practice and assessment **(8 hours each)**
- You also study a structured study program by unit in the online learning platform for **4 hours** per week

- To get the most out of your course you need to do some self- study in your own time. When you are ready there is a work placement of 120 hours spread over 3-4 weeks
- Commencement dates are the start of every term.

See the website for our intake dates or ring the office for details.

Course **DELIVERY**

Delivery is a combination of methods to cover the theory and practice requirements:

- Workshops for developing your theory knowledge such as anatomy and medications and care plans
- Supplementary learning online for each unit in theory and skills and case studies
- Demonstrations then practice to give you that valuable practice time before you go to the work place
- Self-paced study and support to embed your learning and practical skills
- Work placements to apply your skills.

You will be trained to use manual handling equipment and other equipment such as:

- Lifting hoist, Stand up Lifter, Pelican Belt, Slide Sheet, Electric bed, & Wheelchair.
- Glucometer, Blood Pressure, Pulse Oximeter etc.
- Medication Trolley, Medications (Dummy), & Dressing Trolley.

Work Placement at an Aged Care facility is arranged with you and you will receive the support of one of our mentors to ensure this opportunity is a rewarding experience. For work placement, students have to wear your own black trousers and black closed shoes, we will provide you with NTA logo Polo T-shirt.

Course **TOPICS**

Study **14 units** to gain your qualification

11 Core units and **3 Elective** units.

Our course has been designed to meet the requirements for the CHC43115 Certificate IV in Disability.

Core **UNITS**

UNIT CODE	UNIT NAME	STATUS
CHCDIV001	Work with diverse people	Core
CHCLEG003	Manage legal and ethical compliance	Core
HLTAAP001	Recognise healthy body systems	Core
CHCCCS015	Provide individualised support	Core
CHCDIS009	Facilitate ongoing skills development using a person-centred approach	Core
CHCDIS010	Provide person-centred services to people with disability with complex needs	Core
CHCDIS007	Facilitate the empowerment of people with disability	Core
HLTWHS002	Follow safe work practices for direct client care	Core
CHCDIS002	Follow established person-centred behaviour supports	Core
CHCDIS005	Develop and provide person-centred service responses	Core
CHCDIS008	Facilitate community participation and social inclusion	Core

Electives **UNITS**

UNIT CODE	UNIT NAME	STATUS
HLTHPS006	Assist clients with medications	Elective
HLTHPS007	Administer and monitor medications	Elective
CHCAGE005	Provide support to people living with dementia	Elective

For more details/information, ask for an Information Pack.

Course **ASSESSMENTS**

As this is a nationally recognised qualification, you will be required to successfully complete all units to a standard so that you are job ready. Each unit contains assessments which include:

- Knowledge based tests which contain written short answer questions, case studies and project works
- Practical demonstrations where you will be observed by one of our assessors in a simulated environment.
- Demonstration of clinical skills in Work place environment, assessed by our facilitator

Note: You must be deemed competent with each unit in order to receive your qualification.

Requirements for the **WORK PLACEMENT**

- A Police Clearance Certificate is mandatory prior to your work placement; you must under take a Federal Police Check (AFP) or NSW Police check (it must be no less than 12 months old).

This can be done through a website.

- Working with Children check
- Relevant immunization check (as per NSW health guide lines)

These checks must be completed at the start of the course and prior to industry work placement. **The students must be physically be able to do moderate amount of lifting** using the appropriate equipment. The students should not have any mobility, hearing, and vision problems to carry out duties efficiently in the hospital or community care settings whilst at placement

Recognition of Prior Learning (RPL) and **CREDIT TRANSFER**

You may have developed a number of skills in community service or disability care, through previous employment opportunities, life experience or formal studies. If this is the case, then you should ask about recognition of prior learning. This may shorten your course. If you hold a current First Aid Certificate from a recognised RTO you will be given credit for the first aid unit.

Course **PATHWAYS** **This is only the start of your academic journey**

After achieving the Certificate IV in Disability Support you have a number of pathway options. You can complete further study and gain the Certificate IV in Ageing or go on to the Diploma Community Services with NTA or apply for Bachelor of Nursing.

CHC52015 Diploma of Community Services

CRICOS Course Code: 094435F

18 Months course for international students [78 weeks]

Course **OUTLINE**

This qualification focuses on the roles of community services, case management and social housing workers involved in the managing, co-ordinating and/or delivering services to individuals, groups and communities. At this level, workers have specialised skills in community services and work autonomously under broad directions from senior management. They provide direct support to individuals or groups of individuals and case management. There may be supervision of other workers and volunteers.

Who should do this **COURSE?**

People pursuing a career in a case management role in a community setting.

Graduates may seek employment in the following jobs:

- Community services worker
- Program coordinator
- Early intervention worker
- Youth officer
- Group facilitator
- Welfare worker
- Case worker

Entry **REQUIREMENTS**

- Applicants must be 18 years or above
- School education at least at Australian high school leaving level Year 12 (HSC in NSW); or other relevant qualification/s;
- Or experience in an aged care or nursing environment;
- Academic IELTS 5.5 overall, no less than 5.0 in each band, or upper intermediate, or EAP from approved ELICOS/ESL centre or
- Evidence of completing a VET course at Certificate IV or above level in Australia.

Course **DURATION**

This course is 78 weeks. The structure is based on 20 hours per week as follows:

- You attend College two days a week for classroom learning, practice and assessment (8 hours each)
- You also study a structured study program by unit in the online learning platform for 4 hours per week

- To get the most out of your course you need to do some self- study in your own time. When you are ready there is a work placement of 240 hours spread over 4th and 6th terms.
- Commencement dates are the start of every term.

See the website for our intake dates or ring the office for details.

Course **DELIVERY**

Delivery is a combination of methods to cover the theory and practice requirements:

- Workshops for developing your theory knowledge such as case management theory
- Supplementary learning online for each unit in theory and skills and case studies
- Demonstrations then practice to give you that valuable practice time before you go to the work place
- Self-paced study and support to embed your learning and practical skills
- Work placements to apply your skills.

You will be trained to use manual handling equipment and other equipment such as:

- Lifting hoist, Stand up Lifter, Pelican Belt, Slide Sheet, Electric bed, & Wheelchair.
- Glucometer,, Blood Pressure, Pulse Oximeter etc.
- Medication Trolley, Medications (Dummy), & Dressing Trolley.

Work Placement at a Community Service facility is arranged with you and you will receive the support of one of our mentors to ensure this opportunity is a rewarding experience. For work placement, students have to wear your own black trousers and black closed shoes, we will provide you with NTA logo Polo T-shirt.

Course **TOPICS**

Study **16 units** to gain your qualification

8 Core units and **8 Elective** units.

Our course has been designed to meet the requirements for the **CHC52015 Diploma of Community Services**.

Core **UNITS**

UNIT CODE	UNIT NAME	STATUS
CHCCCS007	Develop and implement service programs	Core
CHCCOM003	Develop workplace communication strategies	Core
CHCDEV002	Analyse impacts of sociological factors on clients in community work and services	Core
CHCDIV003	Manage and promote diversity	Core
CHCLEG003	Manage legal and ethical compliance	Core
CHCMGT005	Facilitate workplace debriefing and support processes	Core
CHCPRP003	Reflect on and improve own professional practice	Core
HLTWHS004	Manage work health and safety	Core

Electives **UNITS**

UNIT CODE	UNIT NAME	STATUS
CHCCCS004	Assess co-existing needs	Elective
CHCCSM004	Coordinate complex case requirements	Elective
CHCCSM005	Develop, facilitate and review all aspects of case management	Elective
CHCCSM006	Provide case management supervision	Elective
CHCDIS005	Develop and provide person-centred services response	Elective
CHCAGE001	Facilitate the empowerment of older people	Elective
CHCDIS008	Facilitate community participation and Social Inclusion	Elective
CHCDIS010	Provide person-Centred services to people with disabilities with Complex Needs	Elective

For more details/information, ask for an Information Pack.

Course **ASSESSMENTS**

As this is a nationally recognised qualification, you will be required to successfully complete all units to a standard so that you are job ready. Each unit contains assessments which include:

- Knowledge based tests which contain written short answer questions, case studies and project works
- Practical demonstrations where you will be observed by one of our assessors in a simulated environment.
- Demonstration of clinical skills in Work place environment, assessed by our facilitator

Note: You must be deemed competent with each unit in order to receive your qualification.

Requirements for the **WORK PLACEMENT**

- A Police Clearance Certificate is mandatory prior to your work placement; you must under take a Federal Police Check (AFP) or NSW Police check (it must be no less than 12 months old).

This can be done through a website.

- Working with Children check
- Relevant immunization check (as per NSW health guide lines)

These checks must be completed at the start of the course and prior to industry work placement. The students must be physically be able to do moderate amount of lifting using the appropriate equipment. The students should not have any mobility, hearing, and vision problems to carry out duties efficiently in the hospital or community care settings whilst at placement.

Recognition of Prior Learning (RPL) and **CREDIT TRANSFER**

You may have developed a number of skills in community service or aged care or disability care, through previous employment opportunities, life experience or formal studies. If this is the case, then you should ask about recognition of prior learning. This may shorten your course.

Course **PATHWAYS** This is only the start of your academic journey

After achieving the Diploma of Community Services you have a number of pathway options. You can complete apply for Community Service Degrees or Bachelor of Nursing.

HLT54115 Diploma of Nursing

CRICOS Course Code: 097297J

18 Months course for international students [78 weeks]

Course **OUTLINE**

This qualification aims to equip you with skills and knowledge required to provide nursing care for people across the health sector. It reflects the role of an enrolled nurse working under supervision of a registered nurse.

Through this qualification your knowledge and skills will be developed in many areas including: Nursing law and ethics, effective communication, cultural diversity, anatomy and physiology, acute and chronic health disorders, clinical nursing skills and medication management.

The HLT54115 Diploma of Nursing program at NURSE TRAINING AUSTRALIA is accredited by the Australian Nursing and Midwifery Accreditation Council (ANMAC). Successful completion of HLT54115 Diploma of Nursing with NTA enables you to be eligible to apply for registration with the Nursing and Midwifery Board of Australia (NMBA). Further information on registration is available on: <http://www.nursingmidwiferyboard.gov.au/>

There are no entry requirements for this qualification in the Health Training Package. However, NTA expects candidates to meet selection criteria set down here and in the pre-enrolment information for candidates to be successful in this higher-level diploma qualification.

**For latest promotion fees, please refer to our website or contact NTA office.*

Who should do this **COURSE?**

Possible Job Outcomes: After successful completion of the course students may work as an Enrolled Nurse (Division-2) in a health or community care facility which might include Hospital, aged care, rehabilitation centre, GP Clinics and Other Health & Beauty Clinics etc. Successful completion of the course enables graduates to be eligible to apply to APHRA for Registration as an Enrolled Nurse. Students must meet the eligibility criteria set by APHRA at the time of Registration.

Course Admission **CRITERIA**

NTA has in place admission criteria for courses in its scope as required by its 'International Students Admission Policy and Procedure' to ensure that candidates meet industry requirements. Applicants are required to:

- Year 12 or equivalent (OR)
- Have an Australian Certificate III in Individual Support or disability work (OR)
- Be of mature age which can be demonstrated by a candidate who is at least of 18 years

AND

- Provide evidence of meeting at least one of the Nursing and Midwifery Board of Australia (NMBA) English language standards listed below prior to enrolment: <http://www.nursingmidwiferyboard.gov.au/Registration-Stadards/English-language-skills.aspx>

NOTE: From 1 July 2018 all students that would be required by the NMBA to provide a formal English language skills test when applying for registration, must provide a formal English language test result demonstrating achievement of the NMBA specified level of English language skills, prior to commencing the program.

1. Has attended and satisfactorily completed at least six years of primary and secondary education taught and assessed in English in either Australia, Canada, New Zealand, Republic of Ireland, South Africa, United Kingdom or United States of America, including at least two years between years 7 and 12

[NB: At the time of applying for NMBA registration as a program graduate: the applicant will have completed an NMBA approved Enrolled Nurse program and will therefore have a qualification that has been taught and assessed solely in English.]

OR

2. At the time of applying for NMBA registration as a program graduate, the applicant will be able to demonstrate having completed 5 years (full time equivalent) of studies taught and assessed in English – that includes a combination of secondary, vocational or tertiary studies (or tertiary education alone) and evidence of a minimum of one year fulltime equivalent pre-registration program of study approved by the recognised nursing and/or midwifery regulatory body in either Australia, Canada, New Zealand, Republic of Ireland, South Africa, United Kingdom or United States.

OR

Has formal English language test score results showing:

3. An IELTS (academic module) with a minimum overall score of 7 and a minimum score of 7 in each of the four components (listening, reading, writing and speaking).

NOTE:

Only accepting test results:

From one test sitting, or

- A maximum of two test sittings in a six-month period only if:
- Achieved a minimum overall score of 7 in each sitting, and

- Achieved a minimum score of 7 in each component across the two sittings, and
- No score in any component of the test is below 6.5.

OR

4. An OET with a minimum score of B in each of the four components (listening, reading, writing and speaking).

NOTE:

Only accepting test results:

- From one test sitting, or
- A maximum of two test sittings in a six-month period only if:
- Was tested in all four components in each sitting, and
- Achieved a minimum score of B in each component across the two sittings, and
- No score in any component of the test is below C.

OR

5. A PTE Academic with a minimum overall score of 65 and a minimum score of 65 in each of the four communicative skills (listening, reading, writing and speaking).

NOTE:

Only accepting test results:

- From one test sitting, or
- A maximum of two test sittings in a six-month period only if:
- A minimum overall score of 65 is achieved in each sitting, and
- You achieve a minimum score of 65 in each of the communicative skills across the two sittings, and
- No score in any of the communicative skills is below 58

OR

6. A TOEFL iBT with a minimum total score of 94 and the following minimum score in each section of the test:

- 24 for listening,
- 24 for reading,
- 27 for writing, and
- 23 for speaking.

NOTE:

Only accepting test results:

- From one test sitting, or
- A maximum of two test sittings in a six-month period only if:
- A minimum total score of 94 is achieved in each sitting, and you achieve a minimum score of 24 for listening, 24 for reading, 27 for writing and 23 for speaking across the two sittings, and No score in any of the sections is below:
- 20 for listening
- 19 for reading
- 24 for writing, and
- 20 for speaking

Course **DURATION**

The total duration of the course is 18 months spread through three semesters (6 months each semester).

Semester 1: Focuses on

- Nursing foundations and Code of Ethics
- Nursing Assessment and Planning
- Nursing Policies/Procedures at workplace.

Semester 2: Focuses on

- Complex care Activities
- Nursing management for Acute/Chronic Diseases
- Administration of medication including IV (Intravenous medications)
- Working with patients of diverse people including ATSI

Semester 3: Focuses on Ready to work in Health Industry

- Performing role of EN's
- Qualitative leadership
- Administration of medication including IV (Intravenous medications)

Throughout the course duration you need to:

- Attend College three days a week for classroom learning, practice and assessment (8 hours each)
- To get the most out of your course you need to do some self- study in your own time. Recommended 6 hours per week.
- There is an expectation that additional study and research will be undertaken in your own time to meet competency requirements.
- There is a work placement of 400 hours spread over 3 semesters



Course **STRUCTURE**

HLT54115 Diploma of Nursing consists of 25 units of competence:

20 Core units | 5 Elective units

All the core and electives units are covered throughout the three semesters along with Professional Experience Placements (PEP)

Semester 1

UNIT CODE	UNIT NAME	STATUS
HLTAAP002	Confirm physical health status	Core
CHCDIV001	Work with diverse people	Core
HLTAAP003	Analyse and respond to client health information	Core
HLTENN002	Apply communication skills in nursing practice	Core
HLTENN003	Perform clinical assessment and contribute to planning nursing care	Core
HLTENN004	Implement, monitor and evaluate nursing care plans	Core
HLTENN013	Implement and monitor care of the older person	Core
HLTINF001	Comply with infection prevention and control policies and procedures	Core
HLTWHS002	Follow safe work practices for direct client care	Core
HLTAID003	Provide first aid	Elective
PEP-1 Professional Experience Placement for 120 HOURS (Ageing)		

Semester 2

UNIT CODE	UNIT NAME	STATUS
CHCRP003	Reflect on and improve own professional practice (Part-1)	Core
CHCDIV002	Promote Aboriginal and Torres strait Islander cultural safety	Core
HLTENN007	Administer and monitor medicines and intravenous therapy(Part-1)	Core
HLTENN008	Apply legal and ethical parameters to nursing practice	Elective 2
HLTENN015	Apply nursing practice in primary health care settings	Core
CHCPOL003	Research and apply evidence to practice	Core
HLTENN009	Implement and monitor care for a person with mental health conditions	Core
HLTENN011	Implement and monitor care for a person with acute health problems	Core
HLTENN012	Implement and monitor care for a person with chronic health problems	Core
PEPEP-2 Professional Experience Placement for 120 HOURS (Acute/Rehab/Mental Health)		

Semester 3

UNIT CODE	UNIT NAME	STATUS
HLTENN001	Practise nursing within the Australian health care system	Core
HLTENN005	Contribute to nursing care of a person with complex needs	Core
HLTENN006	Apply principles of wound management in the clinical environment	Core
HLTENN010	Apply a palliative approach in nursing practice	Elective 3
HLTENN007	Administer and monitor medicines and intravenous therapy (Part-2)	Core
HLTENN025	Implement and monitor care of person with diabetes	Elective 4
BSBLDR403	Lead team effectiveness (ELECTIVE)	Elective 5
CHCPRP003	Reflect on and improve own professional practice (Part-2)	Core
PEP-3 Professional Experience Placement for 160 HOURS (Acute care)		

Course **DELIVERY**

- NTA uses face to face delivery model. Face to face classroom-based delivery involves knowledge and practical training in a simulated environment.
- Face to face learning allows you to learn in a classroom environment where you will be attending classes at set times, at our Burwood campus. You will have individual support from your contact lecturer.
- Students will be attending three-day face to face classes held in different session for example: Lectures, tutorials, simulation training, work placements, guest lectures and information sessions.
- Apart from the face to face classroom you will be using NTA's eLearning platform (CANVAS) to access unit content, learning resources of a unit, online assessments and information about other assessments methods involved in the unit.
- Location for delivering the course: 106-108, 3 Railway Parade NSW 2134

It's a MANDATORY REQUIREMENT that you attend all the three classes in a week

Course **ASSESSMENTS**

As this is a nationally recognised qualification, you will be required to successfully complete all units to a standard so that you are job ready. You must be deemed competent with each unit in order to receive your qualification. Each unit contains assessments may include:

- Online assessment where students need to complete in the LMS platform
- Objective structured clinical examination (OSCE)
- End of Semester exam (closed book)
- Observation conducted at the Professional Experience Placement again administered by NTA Assessors.

The process, method and timing of assessment are explained in individual unit outline which can be accessed in your Elearning platform (CANVAS)

Each assessment has been designed to ensure validity, reliability, fairness, and a level of flexibility.

Professional experience **PLACEMENTS**

Professional Experience Placements will be set up for 400 hours in different health and community service facilities.

Aged Care Facilities: 15 – days (8 hours shift) in semester 1

Subacute and Mental health (Hospitals): 15 – days (8 hours shift) in semester 2

Acute Care (Hospitals): 20 – days (8 hours shift) in semester 3

The student must be deemed ready for work placement by the trainer. The Trainer/assessor or Work Placement Co-ordinator will discuss the best options for placement with every student to find a location and timing that suits. This is a valuable opportunity where the student is able to practice all the skills and applied knowledge developed across the course under supervision.

Requirement for professional experience

PLACEMENTS (PEP)

- The students must be physically being able to do moderate amount of lifting using the appropriate equipment. The students should not have any mobility, hearing, and vision problems to carry out duties efficiently in the hospital or community care settings whilst at placement.
- A Police Clearance Certificate is mandatory prior to work placement; students must undertake a Federal Police Check (AFP) or NSW Police check (it must be no less than 12 months old). This can be done through a website.
- Working with Children check
- Relevant immunization check (as per NSW health guide lines)
- These checks will be completed at the start of the course and prior to Professional Experience placement.
- You will be registered with AHPRA after commencement of the program and before commencing your PEP 1

Recognition of Prior Learning (RPL) and **CREDIT TRANSFER**

You may have developed a number of skills in aged care, through previous employment opportunities, life experience or formal studies. If this is the case then you should ask about recognition of prior learning. This may shorten your course. If you hold a current First Aid Certificate from a recognised RTO you will be given credit for the first aid unit.

Course PATHWAYS

Students can opt for the follow the pathways.

- Study Diploma of Nursing and Become Enrolled Nurse (EN, Division 2)
- Register with APHRA as an Enrolled Nurse
- Gain advanced standing towards your bachelor's degree in Nursing with universities subject to their requirements
- Gain advanced standing towards Advanced Diploma of Nursing
- Join a workforce that is in high demand
- Become a Registered Nurse (RN, Division 1) by Enrolling directly in the second year of your Bachelor of Nursing with Universities subject to their requirements
- Become a highly respected health professional and perform patient assessments and advanced procedures.

Course **INTAKE DATES 2020**

Intake dates for Certificate III in Individual Support | Certificate IV in Ageing Support | Certificate IV in Disability and Diploma in Community Services

Term/Intake	Start Date	End Date	No. of Weeks	Session/Break
1st	03 February	05 April	9	Session
Holiday	06 April	19 April	2	Break
2nd	20 April	21 June	9	Session
Holiday	22 June	12 July	3	Break
3rd	13 July	13 September	9	Session
Holiday	14 September	27 September	2	Break
4th	28 September	29 November	9	Session
Holiday	30 November	02 February	9	Break

Intake dates for HLT54115 Diploma of Nursing are semester based, Every semester is 6 months of duration followed by 3 weeks break of each semester.

1st intake 3rd February 2020

2nd intake 6th JULY 2020

*Public **HOLIDAYS**

01 Jan	New Year's Day
26 Jan	Australia Day
10 Apr	Good Friday
11 Apr	Holy Saturday
12 Apr	Easter Day
13 Apr	Easter Monday
25 Apr	Anzac Day
08 Jun	Queen's Birthday
05 Oct	Labour Day
25 Dec	Christmas Day and
26 Dec	Boxing Day



Course **INTAKE DATES 2021**

**Intake dates for Certificate III in Individual Support | Certificate IV in Ageing Support |
Certificate IV in Disability and Diploma in Community Services**

Term/Intake	Start Date	End Date	No. of Weeks	Session/Break
1st	01 February	04 April	9	Session
Holiday	05 April	18 April	2	Break
2nd	19 April	20 June	9	Session
Holiday	21 June	11 July	3	Break
3rd	12 July	12 September	9	Session
Holiday	13 September	26 September	2	Break
4th	27 September	28 November	9	Session
Holiday	29 November	30 January 2022	9	Break

Intake dates for HLT54115 Diploma of Nursing are semester based, Every semester is 6 months of duration followed by 3 weeks break of each semester.

1st intake 1st February 2021

2nd intake 1st JULY 2021

*Public **HOLIDAYS**

01 Jan	New Year's Day
26 Jan	Australia Day
02 Apr	Good Friday
03 Apr	Holy Saturday
04 Apr	Easter Day
05 Apr	Easter Monday
25 Apr	Anzac Day
14 Jun	Queen's Birthday
04 Oct	Labour Day
25 Dec	Christmas Day and
26 Dec	Boxing Day

All new students must participate in an orientation session held on Monday (9am), the first week of each term.

Please note as per the ESOS Act if a student does not commence on course commencement date mentioned on his/her CoE, we must notify student default to the Department of Immigration and Border Protection via PRISMS.



Our Class **SIZES**

We at Nurse Training Australia believe in small class sizes to give the maximum benefit, care and attention to all our students.

Course fees and **CHARGES**

CHC33015: Certificate III in Individual Support [26 weeks]

1st Installment Tuition Fees upon enrolment: **\$2,500** | Enrolment Fees: **\$200** [non-refundable]

Total Course Fee Payable: \$5,500

CHC43015: Certificate IV in Ageing Support [52weeks]

CHC43115: Certificate IV in Disability [52 weeks]

1st Installment Tuition Fees upon enrolment: **\$3,900** | Enrolment Fees: **\$200** [non-refundable] |

Total Course Fee Payable: \$9,900 + Materials Fee \$500

CHC52015: Diploma of Community Services [78 weeks]

1st Installment Tuition Fees upon enrolment: **\$4,900** | Enrolment Fees: **\$200** (non-refundable)-

Total | Course Fee Payable: \$16,000 + Materials Fee \$500

HLT54115: Diploma of Nursing [78 weeks]

1st Installment Tuition Fees upon enrolment: **\$10,000** | Enrolment Fees: **\$200** (non-refundable)-

Total | Course Fee Payable: \$26,000 + Materials Fee \$2,000

Students can choose anyone of the above Cert 4 level qualification along with Diploma of community Services or Diploma of Nursing as a packaged course [130 Weeks]

1st Installment Tuition Fees upon enrolment: **\$4900** [with Diploma of Community Services]

1st Installment Tuition Fees upon enrolment: **\$6000** [with Diploma of Nursing]

Enrolment Fees: **\$200** [non-refundable] Total Course Fee Payable: **\$33,900**

Before making any payments, please familiarise yourself with NTA's college "Refund Policy" available from our website.

Steps to Enrol-**INTERNATIONAL STUDENTS**

- You can enrol via the website: www.nta.edu.au
- Choose any Course from the tab: International students
- Read through the content and click on “Apply Now”
- A new window will open up click on “start new online application form”
- Complete the form and attach certified copies of your passport, English language test results, and Academic Transcripts of your qualifications.
- Onshore students will need a release letter from their current college if the student wants to do a course with NTA if they haven't completed their course with the current college.

Application Assessed

(Once your New student application will come from either of 3 methods)

1. Direct application 2. Admin data entry 3. Agent Portal

NTA student services will check & Verify Documents for the course you have chosen

1. English requirement 2. Academic requirement-Transcripts 3. Age requirement 4. Passport

NTA Student Services Issue Offer Letter

NTA student services will send/email offer letter to student or agent or both- depends on how application was made Payment details are included in the offer letter for the course chosen.

Student pays 1st instalment, Signs and sends back the scanned acceptance letter to info@nta.edu.au

NTA Issues eCoE

NTA Creates an eCoE with all the required details. NTA staff will send eCoE and fee receipt to student/agent or both and student applies for student visa.

Application for Student Visa

Student applies for student visa using eCoE via the online application system at www.border.gov.au/trav/visa/appl/student For more information on student visas visit the link below <http://www.border.gov.au/Trav/Visa-1/500->

Planning for your Arrival

Notify NTA of approval and communicate with student services for extra services like Airport Pick Up and Accommodation arrangements at least 2-3 weeks prior to arrival. Student should plan to arrive in Sydney before the day of orientation

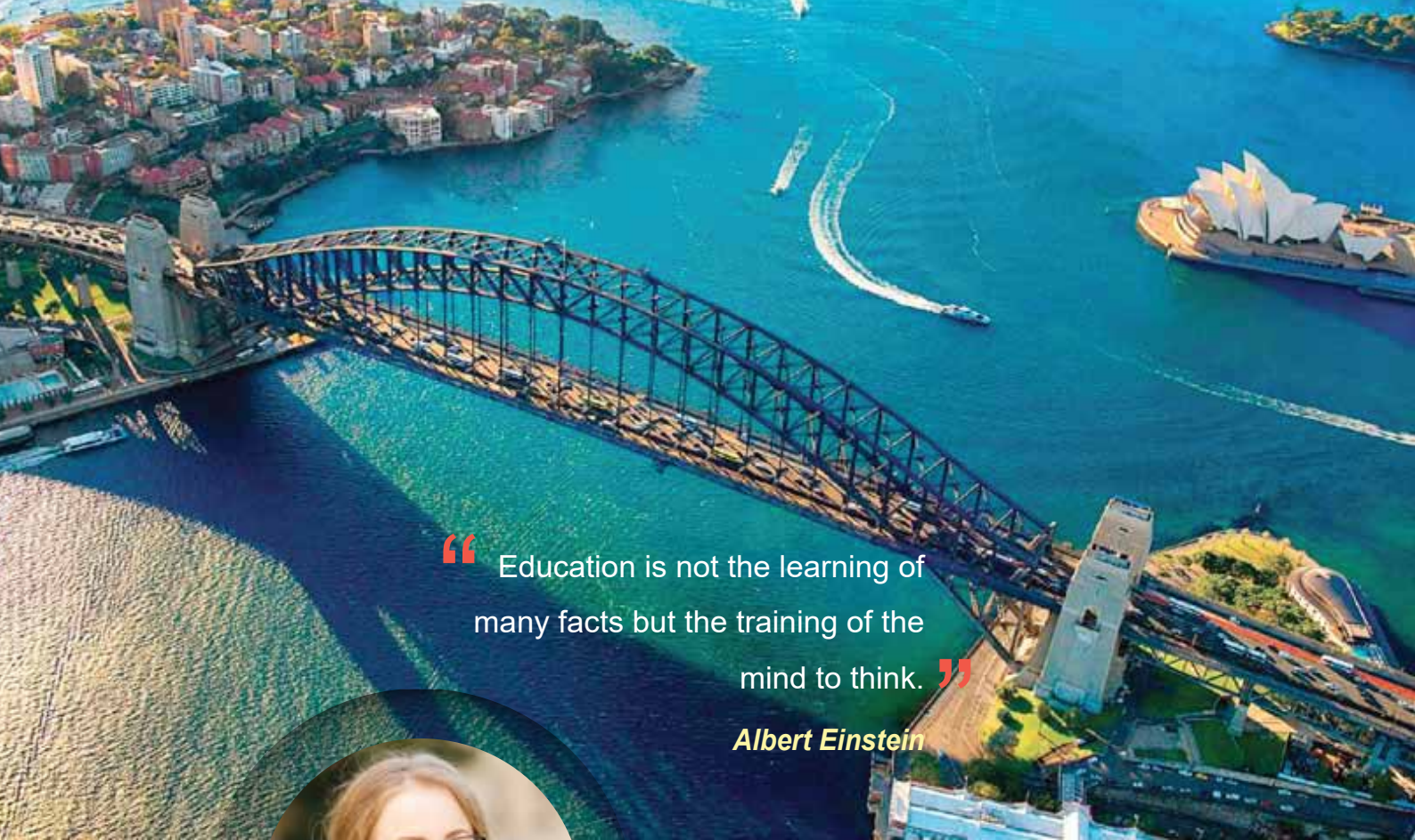
Allocate student for Orientation

Once the student notifies of Visa Grant, NTA will Send Pre-departure info and welcome pack to student and Schedule the student for orientation. On the day of orientation the college will introduce student to the facilities, address any course matters, individual needs, collect resources, student ID card and commence on the enrolled course.



“The course really helped me get a job and i have recommended this course to all of my friends. I really love the trainer’s teaching method and it was a very good experience.”

Pasang Sherpa (Student)



“ Education is not the learning of
many facts but the training of the
mind to think. ”

Albert Einstein



www.nta.edu.au

Head Office:
Suite 106-108, 3 Railway Parade, Burwood NSW 2134

t + 61 2 9715 6528 f + 61 2 9715 2339

CARE PLUS TRAINING PTY LTD T/A Nurse Training Australia.
ABN: 291 661 75462. CRICOS ID: 03575C. RTO ID: 41009

Our friendly staff are waiting for your call

