



PROMOTING HOLISTIC TRAINING

RTO ID: 41009



CHC43115 CERTIFICATE IV IN DISABILITY

A one-year course for international students

Pathways to
SUCCESS

FOLLOW US ON



www.nta.edu.au



CRICOS Course Code: 094434G
CRICOS ID: 03575C

Head Office: Premises1: Suite 106-108, 3 Railway Parade, Burwood. NSW 2134
Premises 2: Suite 6 132 - 134 Burwood Road, Burwood. NSW 2134 t: + 61 2 9715 6528 f: + 61 2 9715 2339 e: info@nta.edu.au
CARE PLUS TRAINING PTY LTD T/A Nurse Training Australia. ABN: 291 661 75462. CRICOS ID: 03575C. RTO ID: 41009

NTA_CHC43115_Certificate_IV_In_Disability_Version 2.0_Date: 04_04_2017

Course **OUTLINE**

This qualification focuses on the role of workers in a range of community settings and clients' homes, who provide training and support in a manner that empowers people with disabilities to achieve greater levels of independence, self-reliance, community participation and wellbeing. Workers promote a person-centred approach, work without direct supervision and may be required to supervise and/or coordinate a small team.

Course FEE Aus \$10.400 + Materials Fee \$ 500

Entry requirements

- School education at least at Australian high school leaving level Year 12 (HSC in NSW); or other relevant qualification/s;
- Or experience in an aged care, disability service or nursing environment;
- Academic IELTS 5.5 overall, no less than 5.0 in each band, or upper intermediate, or EAP from approved ELICOS/ESL centre or
- Evidence of completing a VET course at Certificate IV or above level in Australia.
- Applicants must be 18 years or above



Requirements for the work placement

- A Police Clearance Certificate is mandatory prior to your work placement; you must undertake a Federal Police Check (AFP) or NSW Police check (it must be no less than 3 years old). This can be done through a website.
- Working with Children check
- Relevant immunization check

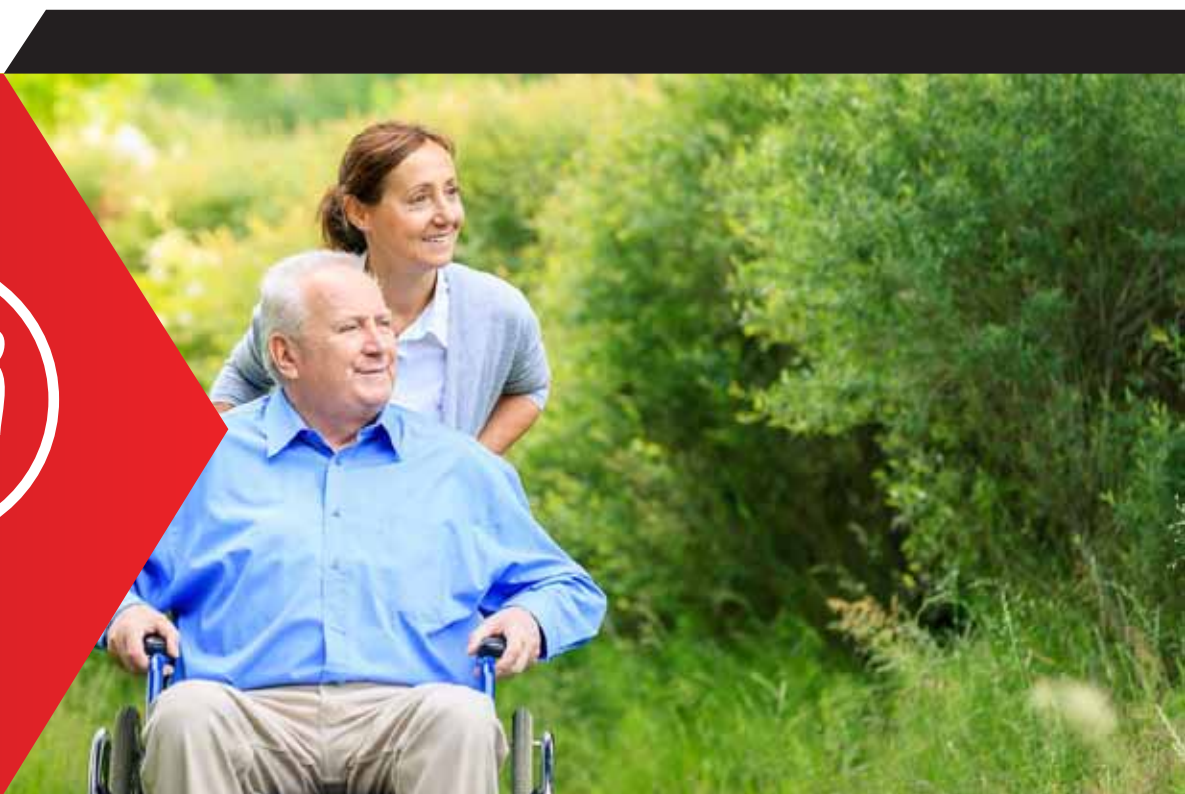
These checks must be completed at the start of the course and prior to industry work placement. The students must be **physically be able to do moderate amount of lifting** using the appropriate equipment. The students should not have any mobility, hearing, and vision problems to carry out duties efficiently in the hospital or community care settings whilst at placement.

Who should do this course?

People pursuing a career in a facility such as a Nursing Home, Hostel, Residential Care Facility, Disability Facility, and Community Health Care Centre.

Graduates may seek employment in the following jobs:

- Accommodation support worker
- Care team leader
- Hostel supervisor
- Care supervisor
- Personal Care Worker
- Residential care worker



Course DURATION

This course is 52 weeks. The structure is based on 20 hours per week as follows:

You attend College two days a week for classroom learning, practice and assessment (8 hours each) You also study a structured study program by unit in the online learning platform for 4 hours per week.

To get the most out of your course you need to do some self- study in your own time. When you are ready there is a work placement of 120 hours spread over 3-4 weeks Commencement dates are the start of every term. See the website for our intake dates or ring the office for details.

Course location

All training is held at our office at Burwood which is right next to the railway station. Work placements will be selected where possible to meet your travel needs.

Work placement locations

Work placements in a facility in Sydney will be arranged to meet your travel needs. We manage and support the placement.





“ I already recommended one of my friend for certificate 4 in ageing support and she will attend the classes soon. Manual handling training is an important part of the course and it was provided brilliantly by the trainer. ”

Testimonial – Manju Subba



“ I got the job when i was doing my training which was only because of excellent teaching by the teachers. I would love to recommend this course and i have already convinced most of my friends to enroll in to nurse training australia.”

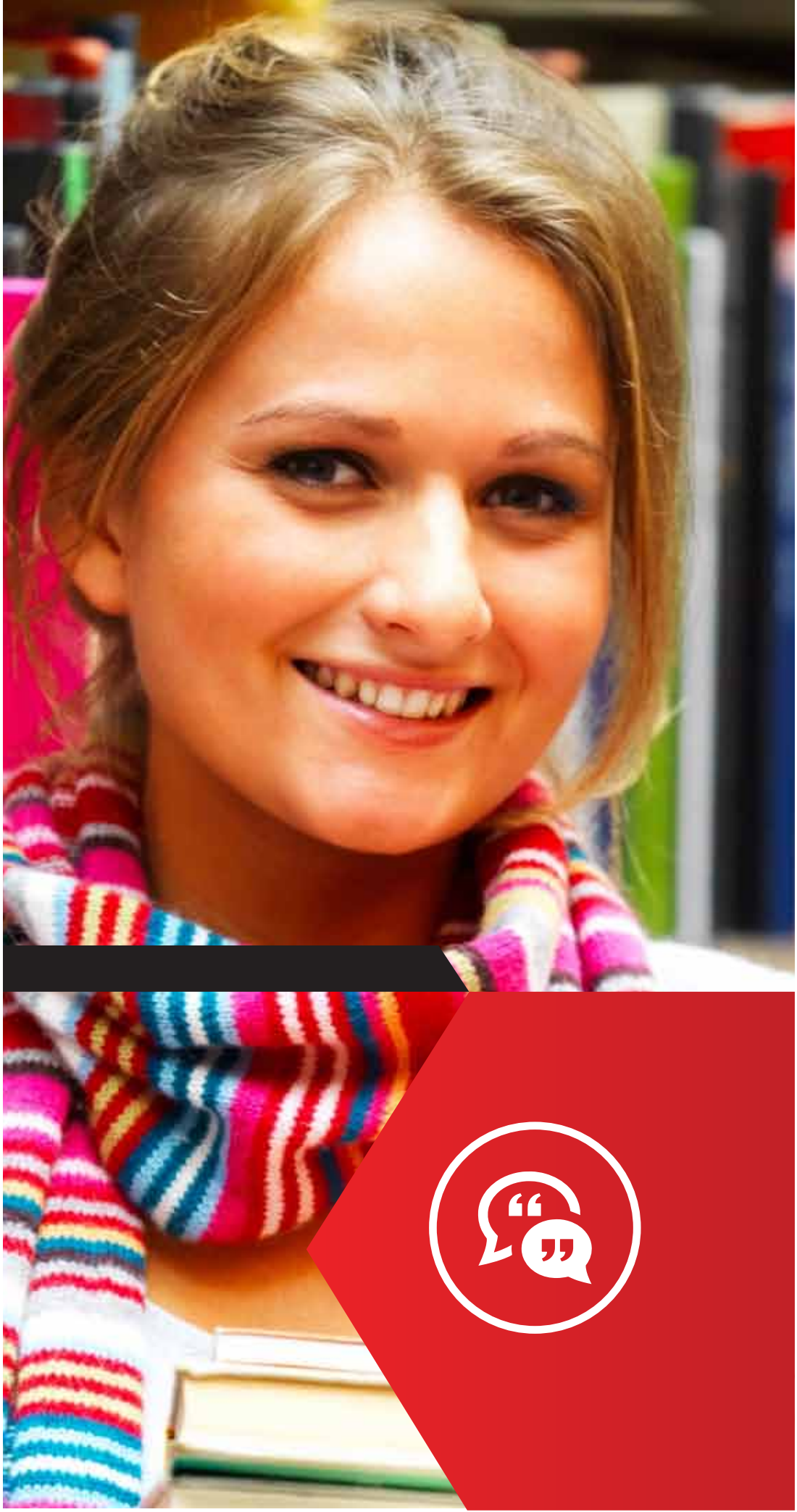
Testimonial – Mahender Reddy



“ The course really helped me get a job and i have recommended this course to all of my friends. I really love the trainer’s teaching method and it was a very good experience. ”

Testimonial – Harmonjeet Kaur

WHAT OUR STUDENTS SAYS



Assessments

As this is a nationally recognised qualification, you will be required to successfully complete all units to a standard so that you are job ready. Each unit contains assessments which include:

- Practical demonstrations where you will be observed by one of our assessors in a simulated environment and in your work placement
- Knowledge based tests which contain written short answer questions
- Small projects which contain written tasks for you to investigate and complete in your own time.

Note: You must be deemed competent with each unit in order to receive your qualification.



Course DELIVERY

Delivery is a combination of methods to cover the theory and practice requirements:

- Workshops for developing your theory knowledge such as anatomy and medications and care plans
- Supplementary learning online for each unit in theory and skills and case studies
- Demonstrations then practice to give you that valuable practice time before you go to the work place
- Demonstrations then practice to give you that valuable practice time before you go to the work place
- Self-paced study and support to embed your learning and practical skills
- Work placements to apply your skills

You will be trained in the use of manual handling equipment and other equipment such as:

- Lifting hoist, Stand up Lifter, Pelican Belt, Slide Sheet, Electric bed, & Wheelchair.
- Blood sugar testing equipment, Blood Pressure, Pulse Oximeter etc.
- Medication Trolley, Medications (Dummy), & Dressing Trolley.

Work Placement at a Community Service facility/Disability Centre is arranged with you and you will receive the support of one of our mentors to ensure this opportunity is a rewarding experience. For work placement, students have to wear your own black trousers and black closed shoes, we will provide you with a T-shirt.



Recognition of Prior Learning (RPL) and Credit Transfer

You may have developed a number of skills in community service or disability care, through previous employment opportunities, life experience or formal studies. If this is the case, then you should ask about recognition of prior learning. This may shorten your course. If you hold a current First Aid Certificate from a recognised RTO you will be given credit for the first aid unit.

Pathways-this is only the start of your academic journey

After achieving the Certificate IV in Disability Support you have a number of pathway options. You can complete further study and gain the Certificate IV in Ageing or go on to the Diploma Community Services with NTA or apply for Nursing study at university.

Study **14 units** to gain your qualification

Our course has been designed to meet the requirements for the

CHC43115 Certificate IV in Disability

It contains 14 Units; **11 Core** units and **3 Elective** units:


CORE UNITS:

UNIT CODE	UNIT NAME	STATUS
CHCDIV001	Work with diverse people	Core
CHCLEG003	Manage legal and ethical compliance	Core
HLTAAP001	Recognise healthy body systems	Core
CHCCCS015	Provide individualised support	Core
CHCDIS009	Facilitate ongoing skills development using a person-centred approach	Core
CHCDIS010	Provide person-centred services to people with disability with complex needs	Core
CHCDIS007	Facilitate the empowerment of people with disability	Core
HLTWS002	Follow safe work practices for direct client care	Core
CHCDIS002	Follow established person-centred behaviour supports	Core
CHCDIS005	Develop and provide person-centred service responses	Core
CHCDIS008	Facilitate community participation and social inclusion	Core

ELECTIVES WE OFFER:

UNIT CODE	UNIT NAME	STATUS
HLTHPS006	Assist clients with medications	Elective
HLTHPS007	Administer and monitor medications	Elective
CHCAGE005	Provide support to people living with dementia	Elective

For more details/information, ask for an Information Pack.



“ Education is not the learning of many facts but the training of the mind to think. ”



 www.nta.edu.au

Head Office:
Suite 106-108, 3 Railway Parade, Burwood NSW 2134

t: + 61 2 9715 6528 **f:** + 61 2 9715 2339

CARE PLUS TRAINING PTY LTD T/A Nurse Training Australia.
ABN: 291 661 75462. CRICOS ID: 03575C. RTO ID: 41009

Our friendly staff are waiting for your call